



Cehat



2009



The Protection of Women from Domestic Violence Act was passed in 2005. It is a culmination of the relentless struggle of the women's movement in India, to bring this 'personal' form of Violence against Women from behind closed doors, into the public sphere. So far, marital relationships have been under the purview of restrictive personal laws. However, this law provides relief to women of all religions and communities. The act widens the definition of domestic violence by recognising different types of behaviour (physical, emotional, sexual and/or financial) within the household as violence. The provision of a residence order ensures that a woman cannot be evicted from her home. At the same time, the law also entitles a woman to a protection order, thus respecting her right to a violence-free home. Finally, for the first time, marital rape has been recognised as a form of sexual violence.

The Act identifies several 'service providers', including 'Medical Facilities' as players in its implementation. Several roles vis-à-vis women facing domestic violence have been laid down. According to the law, no medical facility can refuse treatment to a woman facing domestic violence, under any circumstances. Further, if necessary, the person-in-charge of the medical facility is required to make a 'Domestic Incident Report' (DIR) if one has not already been made, and forward the same to the Protection Officer in that area. A medical examination report, documenting the injuries caused by violence, must also be given to the woman, free of cost.

In this calendar, we highlight some salient features of the Act and the role that health care professionals and medical facilities have to play in implementing it.

264

Design and layout by Ebrahim Sitabkhan & Poonam Athalye

DIL

014502

264

DIL

014502

27-11-2013

CEHAT, Survey no. 2804/2805
Aaram Society Road
Vakola, Santacruz (E)
Mumbai 400 055 (Maharashtra)
Tel: 26673154, 26673571
E-mail: cehat@vsnl.com

Dilaasa, Dept. No. 15
K.B. Bhabha Municipal Hospital
Belgrami Road, Kurla (W)
Mumbai 400070
Tel.: 2650 0241 Extn.: 212

Dilaasa, Dept. No. 101
K.B.Bhabha Municipal Hospital
R.K. Patkar Marg, Bandra (W)
Mumbai 400 050
Tel.: Direct: 26400229/ 26422775/ 24622541
Extn: 4376/ 4511
Email: Dilaasa@vsnl.net

The Partners

K.B.Bhabha Hospital, Bandra is a 436 bedded well-equipped peripheral hospital and K.B.Bhabha Hospital, Kurla is a 306 bedded peripheral hospital with all major clinical departments.

CEHAT (Center for Enquiry into Health and Allied Themes) is a multi-disciplinary institution promoting and supporting socially relevant health related research, training, service and advocacy. CEHAT is a center of the Anusandhan Trust, which is governed democratically through participatory management and upholds through praxis, transparency, social accountability and ethics.

Thank You!

We would like to thank Bishakha Datta, Manisha Gupte, Aruna Burte, Deepa and Anjali (SAMA), CEHAT's PDC members and CEHAT and Dilaasa staff for their feedback and suggestions.

You could support CEHAT's work on Violence Against Women through donations to the Anusandhan Trust, registered under the Bombay Public Trust Act, 1950, Registration No.E-13480. You could also avail an 80-G exemption for all donations made by cheques/demand draft to Anusandhan Trust. All cheques/demand drafts should be drawn in favour of 'ANUSANDHAN TRUST CEHAT' payable at Mumbai.

The Protection of Women from Domestic Violence Act is the first law on domestic violence, which provides civil and criminal remedies. Women of all religions can seek relief under this law.

P.W.D.V.A



January

Mo	Tu	We	Th	Fr	Sa	Su
			01	02	03	04
05	06	07	08	09	10	11
12	13	14	15	16	17	18
19	20	21	22	23	24	25
26	27	28	29	30	31	

February

Mo	Tu	We	Th	Fr	Sa	Su
						01
02	03	04	05	06	07	08
09	10	11	12	13	14	15
16	17	18	19	20	21	22
23	24	25	26	27	28	



Dilaasa provides social and psychological support to women facing violence.

The law not only recognises violence faced by girls and women from the husband and his family, but also abuse by parents, brothers and live-in partners.



For more information about the act, go to:
<http://www.cehat.org/go/uploads/Pehel/pwdva.pdf>

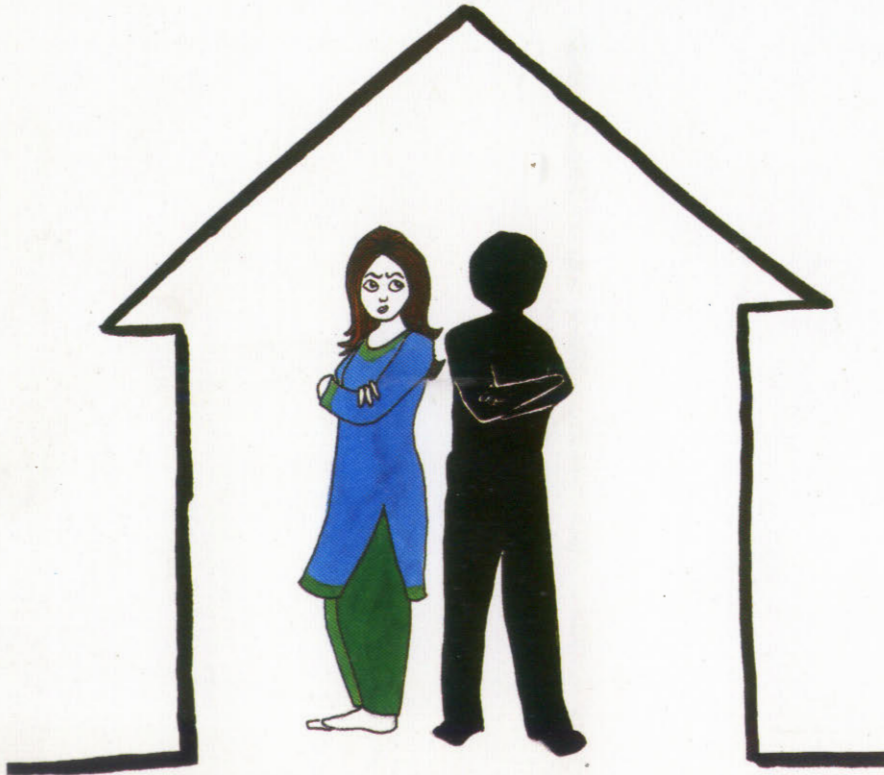
March

Mo	Tu	We	Th	Fr	Sa	Su
30	31					01
02	03	04	05	06	07	08
09	10	11	12	13	14	15
16	17	18	19	20	21	22
23	24	25	26	27	28	29

April

Mo	Tu	We	Th	Fr	Sa	Su
		01	02	03	04	05
06	07	08	09	10	11	12
13	14	15	16	17	18	19
20	21	22	23	24	25	26
27	28	29	30			

A woman's right to reside in her home, even while she is pressing charges against her abusive family, is protected under the law.



Dilaasa provides social and psychological support to women facing violence.

May

Mo	Tu	We	Th	Fr	Sa	Su
				01	02	03
04	05	06	07	08	09	10
11	12	13	14	15	16	17
18	19	20	21	22	23	24
25	26	27	28	29	30	31

June

Mo	Tu	We	Th	Fr	Sa	Su
01	02	03	04	05	06	07
08	09	10	11	12	13	14
15	16	17	18	19	20	21
22	23	24	25	26	27	28
29	30					

As per the law, a woman can directly approach the magistrate's court which must give its final verdict within 60 days.



For more information about the act, go to:
<http://www.cehat.org/go/uploads/Peהל/pwdva.pdf>

July

Mo	Tu	We	Th	Fr	Sa	Su
		01	02	03	04	05
06	07	08	09	10	11	12
13	14	15	16	17	18	19
20	21	22	23	24	25	26
27	28	29	30	31		

August

Mo	Tu	We	Th	Fr	Sa	Su
					01	02
03	04	05	06	07	08	09
10	11	12	13	14	15	16
17	18	19	20	21	22	23
24	24	26	27	28	29	30

09

A woman can seek redress under the law by approaching protection officers, service providers like the counselling centres, shelter homes, medical facilities, the police or magistrate who are responsible for operationalising the law.



Dilaasa provides social and psychological support to women facing violence.

September

Mo	Tu	We	Th	Fr	Sa	Su
		01	02	03	04	05 06
07	08	09	10	11	12	13
14	15	16	17	18	19	20
21	22	23	24	25	26	27
28	29	30				

October

Mo	Tu	We	Th	Fr	Sa	Su
			01	02	03	04
05	06	07	08	09	10	11
12	13	14	15	16	17	18
19	20	21	22	23	24	25
26	27	28	29	30	31	

Health care professionals have a duty to inform women about the law and document their history and injuries in a Domestic Incident Report.

SCREEN
SUPPORT
DOCUMENT
REFER



November

Mo	Tu	We	Th	Fr	Sa	Su
30						01
02	03	04	05	06	07	08
09	10	11	12	13	14	15
16	17	18	19	20	21	22
23	24	25	26	27	28	29

December

Mo	Tu	We	Th	Fr	Sa	Su
		01	02	03	04	05 06
07	08	09	10	11	12	13
14	15	16	17	18	19	20
21	22	23	24	25	26	27
28	29	30	31			



For more information about the act, go to:
<http://www.cehat.org/go/uploads/Pehel/pwdva.pdf>

09