

Jan-Feb



March-April



May-June



July-August



Sept-Oct



Nov -Dec



Sexual violence is an extreme form of physical assault and an expression of power. It should not be associated with notions of honour and character. Sexual abuse is a violation of a woman's right to her body and personhood.

Rape and sexual assault have been used as weapons of war and political repression.

Various forms of sexual violence get reported at health facilities. It is legally binding for health facilities to examine the survivor and systematically gather medical evidence. Health care providers can play an effective role and respond sensitively to women and children reporting sexual abuse.

This year's Dilaasa calendar is about the health care response to survivors of sexual abuse.



Dilaasa is a joint initiative of *Cehat* and Municipal Corporation of Greater Mumbai

Layout and Design : Pramila and Aarthi

THE PARTNERS

K.B.Bhabha Hospital, Bandra is a 436 bedded well equipped peripheral hospital and K.B.Bhabha Hospital, Kurla is a 306 bedded peripheral hospital with all major clinical departments.

CEHAT (Centre for Enquiry into Health and Allied Themes) is a multi disciplinary institution promoting and supporting socially relevant health and related research, training, service and advocacy. CEHAT is a centre of the Anusandhan Trust which is governed democratically through participatory management and upholds through praxis, transparency, social accountability and ethics.

THANK YOU !

We would like to thank Amar Jesani, Padma Prakash, Aruna Burte, Radhika Chandiramani, Manisha Gupte, Point of view and CEHAT staff for their feedback and suggestions.

You could support CEHAT'S work on Violence Against Women by purchasing this calendar and through donation to the Anusandhan Trust, registered under the Bombay Public Trust Act, 1950, Registration No.E-13480. You could also avail an 80-G exemption for all donations made by cheques/demand draft to Anusandhan Trust. All cheques / demand draft should be drawn in favour of 'ANUSANDHAN TRUST - CEHAT' payable at Mumbai.

**CEHAT, Survey no. 2804/2805,
Aaram Society Road, Vakola, Santacruz (E),
Mumbai - 400 055 (Maharashtra).
Tel.: 26673154, 26673571
E-mail: cehat@vsnl.com**

**Dilaasa, Dept. No. 101,
K.B. Bhabha Municipal Hospital,
R.K. Patkar Marg, Bandra (W), Mumbai - 400 050.
Tel.: Direct 26400229 / 26422775 / 26422541
Extn.: 4376 / 4511. E-mail: dilaasa@vsnl.net**

**Dilaasa, Dept. No. 15,
K.B. Bhabha Municipal Hospital,
Belgrami Road, Kurla (W), Mumbai - 400 070.
Tel.: 2650 0241 Extn.212**

Supported by Ford Foundation, New Delhi.

January 2008

S		13	27
M		14	28
T	1	15	29
W	2	16	30
T	3	17	31
F	4	18	
S	5	19	
S	6	20	
M	7	21	
T	8	22	
W	9	23	
T	10	24	
F	11	25	
S	12	26	

Women as young as 4 and as old as 90 have been raped.



Adapted from a poster developed by Leo Burnett for CEHAT

**Rape is not the result of provocation but an expression of power.
Don't hold her responsible for rape. It's not her fault.**

February 2008

S		10	24
M		11	25
T		12	26
W		13	27
T		14	28
F	1	15	29
S	2	16	
S	3	17	
M	4	18	
T	5	19	
W	6	20	
T	7	21	
F	8	22	
S	9	23	

Dilaasa provides social and psychological support to women facing violence.

March 2008

S	9	23	
M	10	24	
T	11	25	
W	12	26	
T	13	27	
F	14	28	
S	1	15	29
S	2	16	30
M	3	17	31
T	4	18	
W	5	19	
T	6	20	
F	7	21	
S	8	22	

Women & children find it difficult to report sexual abuse due to stigma and fear of rejection.



Image developed by Lata P.M. for CEHAT

Recognize the barriers & convey that sexual abuse is a violation of their basic human rights.

April 2008

S	13	27	
M	14	28	
T	1	15	29
W	2	16	30
T	3	17	
F	4	18	
S	5	19	
S	6	20	
M	7	21	
T	8	22	
W	9	23	
T	10	24	
F	11	25	
S	12	26	

***Dilaasa* trains health care providers to respond sensitively to women facing violence.**

May 2008

S	11	25	
M	12	26	
T	13	27	
W	14	28	
T	1	15	29
F	2	16	30
S	3	17	31
S	4	18	
M	5	19	
T	6	20	
W	7	21	
T	8	22	
F	9	23	
S	10	24	

Rape and sexual assault are used as forms of torture during wars, conflicts and communal violence.



Image developed by Leo Burnett for CEHAT

Provide services impartially, irrespective of nationality, class, caste, sex, religion or political beliefs of the patient.

June 2008

S	1	15	29
M	2	16	30
T	3	17	
W	4	18	
T	5	19	
F	6	20	
S	7	21	
S	8	22	
M	9	23	
T	10	24	
W	11	25	
T	12	26	
F	13	27	
S	14	28	

***Dilaasa* provides social and psychological support to women facing violence.**

July 2008

S		13	27
M		14	28
T	1	15	29
W	2	16	30
T	3	17	31
F	4	18	
S	5	19	
S	6	20	
M	7	21	
T	8	22	
W	9	23	
T	10	24	
F	11	25	
S	12	26	

**Sexual violence does not always
leave obvious signs of injury.**

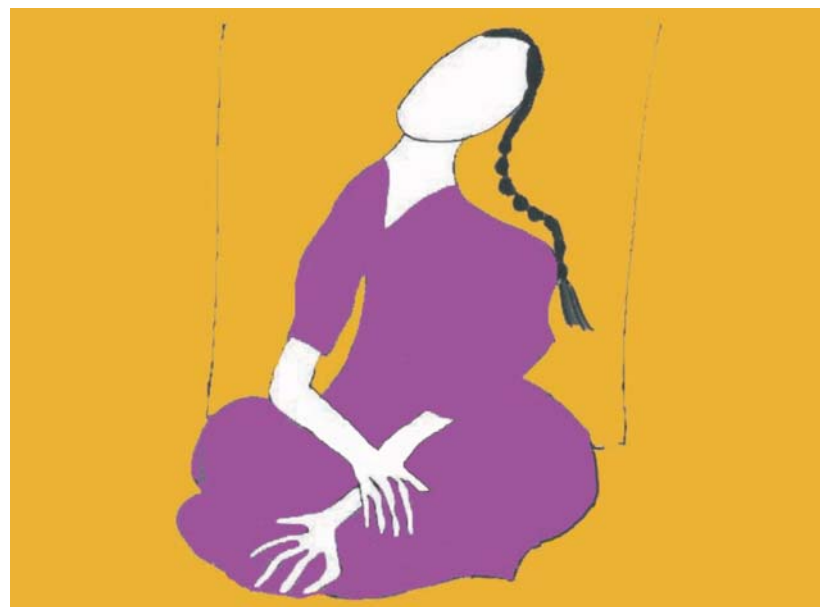


Image developed by Lata P.M. for CEHAT

**Don't limit examination to injuries alone.
Ensure that all medical and forensic evidence is collected.**

August 2008

S		10	24
M		11	25
T		12	26
W		13	27
T		14	28
F	1	15	29
S	2	16	30
S	3	17	31
M	4	18	
T	5	19	
W	6	20	
T	7	21	
F	8	22	
S	9	23	

***Dilaasa* trains health care providers to respond sensitively to women facing violence.**

September 2008

S		14	28
M	1	15	29
T	2	16	30
W	3	17	
T	4	18	
F	5	19	
S	6	20	
S	7	21	
M	8	22	
T	9	23	
W	10	24	
T	11	25	
F	12	26	
S	13	27	



**Most cases of child sexual abuse
occur within homes.**

Educate children on good and bad touch.

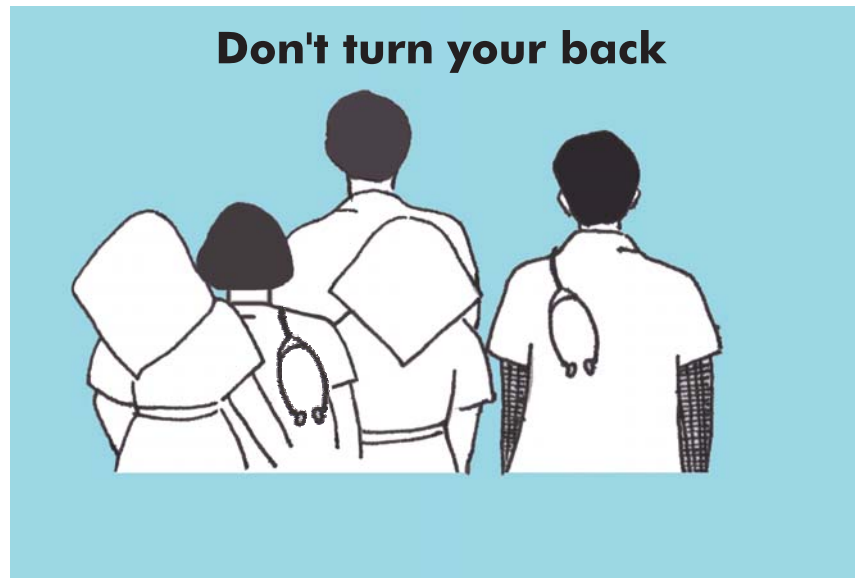
October 2008

S		12	26
M		13	27
T		14	28
W	1	15	29
T	2	16	30
F	3	17	31
S	4	18	
S	5	19	
M	6	20	
T	7	21	
W	8	22	
T	9	23	
F	10	24	
S	11	25	

***Dilaasa* provides social and psychological support to women facing violence.**

November 2008

S	9	23	
M	10	24	
T	11	25	
W	12	26	
T	13	27	
F	14	28	
S	1	29	
S	2	16	30
M	3	17	
T	4	18	
W	5	19	
T	6	20	
F	7	21	
S	8	22	



Survivors of sexual violence need a comprehensive health care response.

Create a safe space Maintain confidentiality
Ensure privacy Provide emotional support

December 2008

S	14	28	
M	1	15	29
T	2	16	30
W	3	17	31
T	4	18	
F	5	19	
S	6	20	
S	7	21	
M	8	22	
T	9	23	
W	10	24	
T	11	25	
F	12	26	
S	13	27	

***Dilaasa* trains health care providers to respond sensitively to women facing violence.**